

© DUAL ENROLLMENT

# UC/CSU Transfer Pathway

**Courses open to 9-12th grade students**

**For more information contact the Dual  
Enrollment office!**



## AJ 110 C: INTRO TO CRIMINAL JUSTICE

Emphasis on the classification of crime, general elements of crime, the definitions of law, and nature of acceptable evidence. Criminal liability on the US and discussion of prosecution and defense decision making, criminal culpability, and defenses to crimes. (UC/CSU, AS GE, CSU GE, IGETC, C-ID: AJ 120)



## AJ 120 C: CONCEPTS OF CRIMINAL LAW

Emphasis on the classification of crime, general elements of crime, the definitions of law, and nature of acceptable evidence. Criminal liability on the US and discussion of prosecution and defense decision making, criminal culpability, and defenses to crimes. (UC/CSU, AS GE, CSU GE, IGETC, C-ID: AJ 120)



## SOC 101 C: INTRODUCTION TO SOCIOLOGY

an analysis of human relationships through a study of cultural origins, personality development, social interaction, community organization, collective behavior, institutional growth, social change, and social movements. UC/CSU, AA GE, CSU GE, IGETC/C-ID: SOCI 110)



## MUS 119 C: HISTORY OF ROCK

From its earliest beginnings to the present day, this course surveys the inception, evolution, and development of Rock music in America and abroad. In addition to in-depth studies of Rock music and the artists who created it, students will examine the sociological, political, and economic conditions which influence its development. (UC/CSU, AA GE, CSU GE, IGETC)

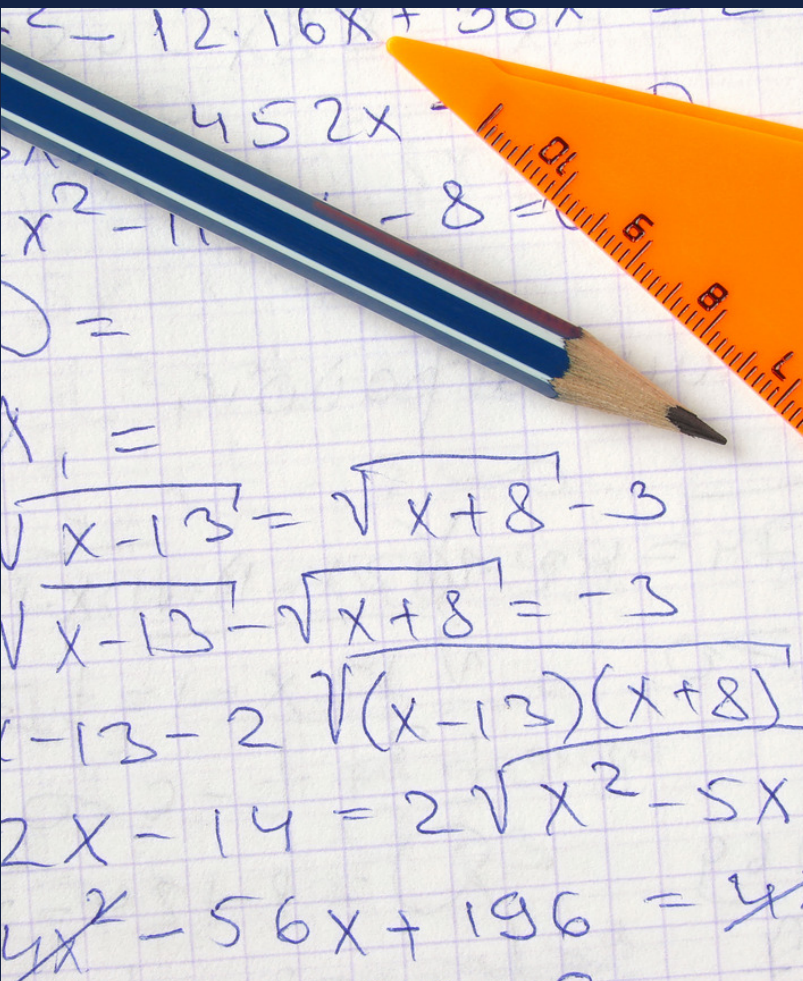
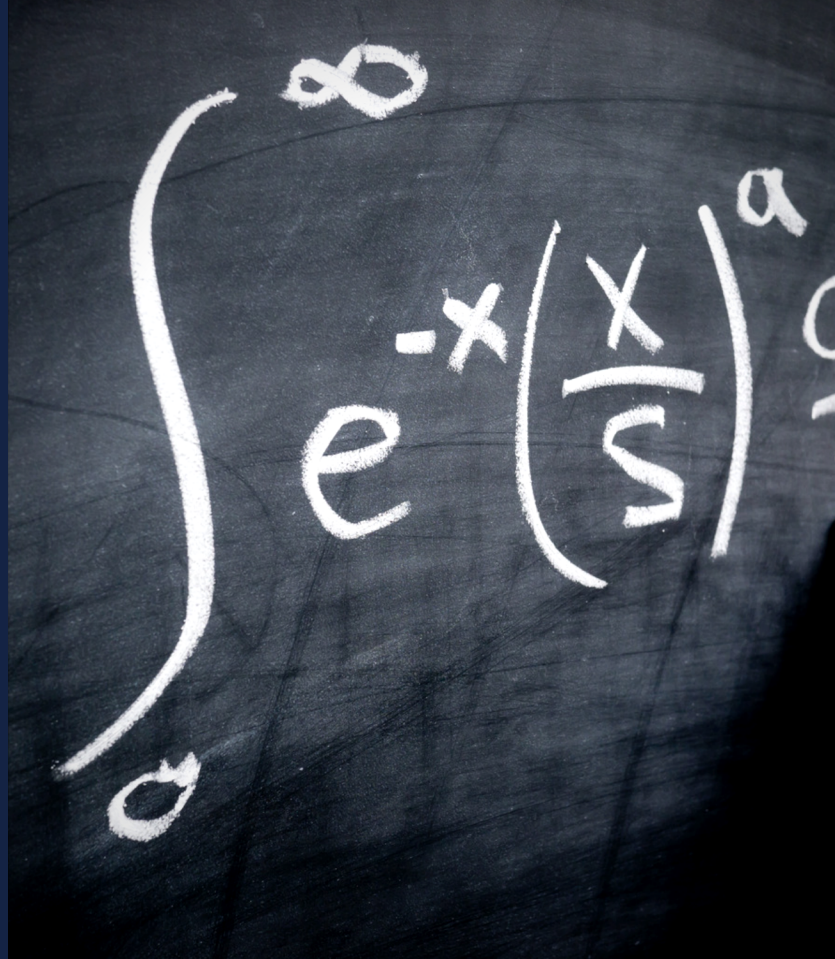




## MATH 250 AC: MULTIVARIABLE CALCULUS

Prerequisite: AP Calculus BC

Includes the study of three-dimensional analytic geometry, calculus of functions of several variables, vector calculus, multiple integration, vector fields and theorems, with associated problem applications. (UC/CSU, AA GE, CSU GE, IGETC, C-ID: MATH 230))



## MATH 250 BC: LINEAR ALGEBRA & DIFFERENTIAL EQUATIONS

Prerequisite: MATH 250 AC

Linear algebra includes matrices, determinants, vector spaces, linear transformations, & characteristic values. Differential equations includes separable, exact, Cauchy-Euler, & nonhomogeneous equations. Additional material to be included. (UC/CSU, AA GE, CSU GE, IGETC, C-ID: MATH 240)



## ETHS 101C: AMERICAN ETHNIC STUDIES

This course examines the historical experiences of Native Americans, African Americans, Chicanos, and Asian Pacific Americans in the United States from the colonial era to the present. Exploration of colonization, migration, the relationship between race and U.S. imperialism; the persistence of social inequalities; and the long historical struggle for racial justice. (UC/CSU, AA GE, CSU GE, IGETC, SOC JUST/C-ID: SOCI 150, SJS 110)

